



Copyright FCI.

A

B

C

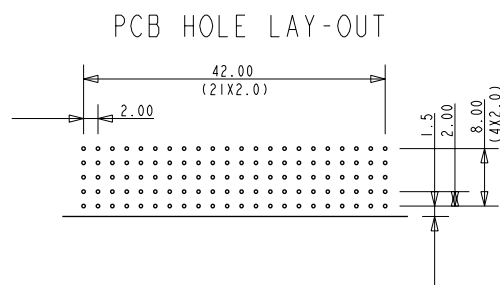
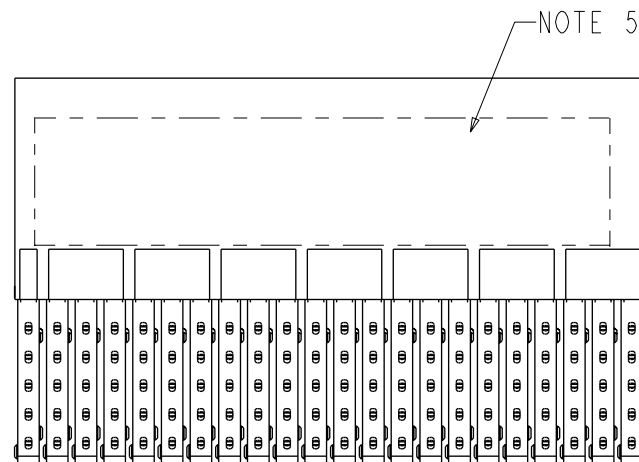
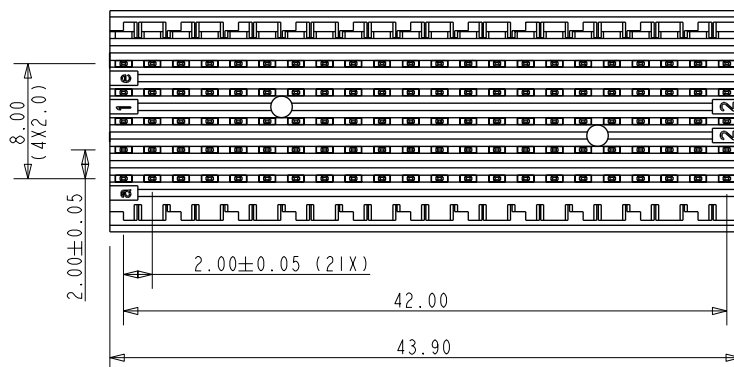
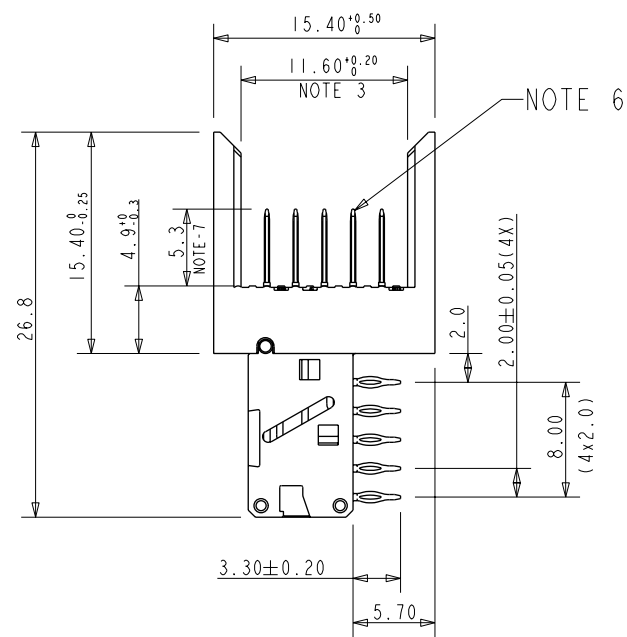
D

A

B

C

D



PERFORMANCE CHARACTERISTICS :

CURRENT RATING : 1.5A AT 20°C (FULLY LOADED)
 1A AT 70°C (FULLY LOADED)
 RATED VOLTAGE : 500V AC (CONT / CONT)
 OPERATING TEMPERATURE : -55°C TO 125°C
 CONTACT RESISTANCE : 25mΩ MAX.
 INSERTION FORCE : 0.75 N MAX / CONT
 EXTRACTION FORCE : 0.15 N MIN / CONT
 INSULATION RESISTANCE : 10⁴ MΩ MIN.

NOTES :

1. CSA CERTIFIED, FILE NUMBER LR 44961-51.
2. UL APPROVED, FILE NUMBER E31151.
3. MEASURED AT THE BOTTOM.
4. MATERIAL CONTACT : PHOSPHORBRONZE.
HOUSING : LCP 30% GLASS-FILLED.
5. CONNECTOR PRINTED WITH P/N AND DATE CODES.
6. FOR ACTUAL CONTACT LOADINGS, SEE LOADING PATTERN MATING SIDE.)
7. 4 = LEVEL 1 (5.30)
5 = LEVEL 2 (6.80)
6 = LEVEL 3 (8.30)

LEAD FREE INDICATOR : LF = LEAD FREE

8. 'HM2J70PE5110



9. FOR RECOMMENDED PTH DIMENSIONS REFER DRAWING : BS,A ,201572,001
10. THIS PRODUCT (LF) MEETS EUROPEAN UNION DIRECTIVES AND OTHER COUNTRY REGULATIONS AS DESCRIBED IN GS-22-008

www.fciconnect.com			surface - ✓ ISO 1302	tolerance std ISO 406 ISO 1101	projection mm	TOLERANCES UNLESS OTHERWISE SPECIFIED	
Dr	M.Fret	2000-12-20	ANGULAR	0.X ±0.2	size A3	Scale 1/1	ECN 108-0050
Eng	M.Fret	2000-12-20					
Chr	Alex Babu	2008-04-24	0° ±1°	0.XX ±0.1	Product family MILLIPACS Spec ref -		
Appr	Alex Babu	2008-04-24	Product family MILLIPACS		Spec ref -		
FCI			title MPACS RA HDR		dwg no BSC202767016		Rev. E
			type B (22 POS), not shielded		CUSTOMER COPY		sheet 1 of 1
			catalog no HM2J70PE5110----				

rev	ecn no	dr	date
A	CONV R0	GNY	2002-08-28
B	EC B20190	MF	2002-11-22
C	105-0108	AB	2005-06-29
D	106-0107	AB	2006-07-15
E	108-0050	AB	2008-04-24
-	-	-	-
-	-	-	-